

ADVANCED SYSTEM ENGINEERING



WX4

BX4

FLYING CAR or DRONE - FIPSI

Flying Innovative Personal Space Icon

contact: office@fipsi.org



Innovative ideas that take the experience of flying to new heights.



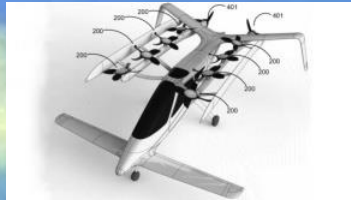
ADVANCED SYSTEM ENGINEERING

-New flying car developments:

- Aeromobil



- Zee Aero car



- PAL-V



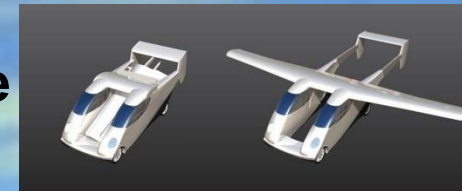
- Moller cars



- Terrafugia



- Carplane



- Switchblade



- NASA
Flying Jeep





Actual air DRONES usage:

- Movie creation
- Destruction areas in war zones
- Border enforcement
- Special operations and law enforcement
- Highway patrol
- Delivery (pizza, flowers, books, beer)
- Electrical power line and gas pipe check





FIPSI-Flying

I nnovative

P ersonal

S pace

I con



WX4



BX4

FIPSI – **F**lying **I**nnovative **P**ersonal **S**pace **I**con

WHAT IS FIPSI ?

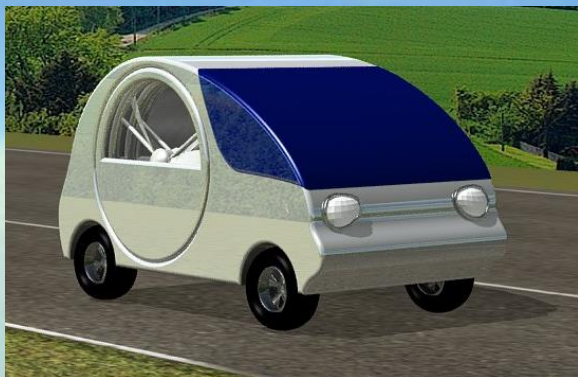
- **FIPSI vehicle represents a revolutionary new innovative PACKAGING concept of vehicle / helicopter / airplane.**
- **FIPSI is virtually an unstoppable vehicle, capable of transitioning between ground and air allowing the development of tricks otherwise impossible to achieve.**
- **FIPSI represents a new compact form of packaging a vehicle, having a compact car look during regular operations and having a FLYING CAR / DRONE look during flight operations.**
- **FIPSI is a complex CAR / DRONE vehicle which can have 1 to 2 degrees of freedom during land operations and have 6 degrees of freedom during air operations.**



FIPSI – Flying Innovative Personal Space Icon

THE DESIGN:

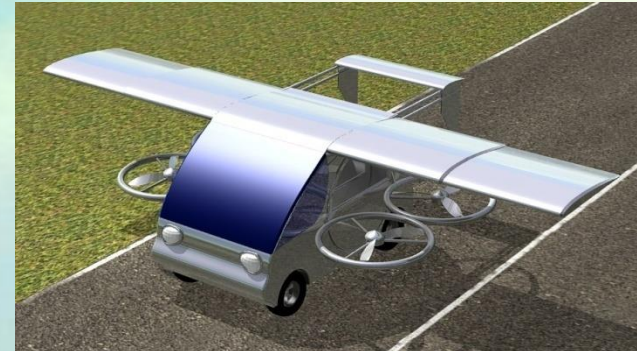
- FIPSI has the rotors packed in a convenient and compact way inside the vehicle body and covered by doors or wings, having a similar car shape look.



FIPSI – F_lying I_nnovative P_ersonal S_pace I_con

THE DESIGN:

- Without having the rotors deployed, FIPSI body maintains similar car configuration and look during driving or flying mode.



FIPSI – Flying Innovative Personal Space Icon

THE DESIGN:

- For flying configuration, FIPSI – BX4 unfolds and rotates the rotors, allowing the vehicle to fly in similar helicopter manner having VTOL capabilities and having a similar look as a multiple rotors air vehicle.
- For flying configuration, FIPSI – WX4 deploys the wings, unfolds and rotates the rotors, allowing the vehicle to fly in similar airplane / helicopter manner having VTOL capabilities.

1  BX4 - concept.mp4



2  WX4 - concept.mp4



BX4



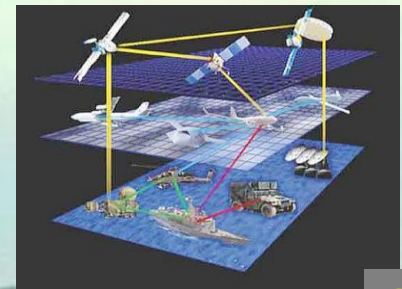
WX4



FIPSI – Flying Innovative Personal Space Icon

THE DESIGN:

- FIPSI use advanced and quality mechanical, electrical, electronic, avionics and sophisticated flight controllers technologies.
- FIPSI provides performance and safety during operations.



FIPSI – Flying **I**nnovative **P**ersonal **S**pace **I**con

WHO CAN USE FIPSI ?

- **FIPSI VEHICLE** can be used and driven by any operator or, using an unmanned remote control **DRONE** version, can be used to transport or remove persons or objects to or from an unsecure remote area for:
 - Logistics
 - Environmental
 - Tourism
 - Infrastructure
- Depending on the configuration, FIPSI vehicle can be used for surveillance of limited controlled areas or very dangerous areas by Special Service departments as:
 - Police
 - Ambulance
 - Fire departments
 - Rescue Squads
 - Military



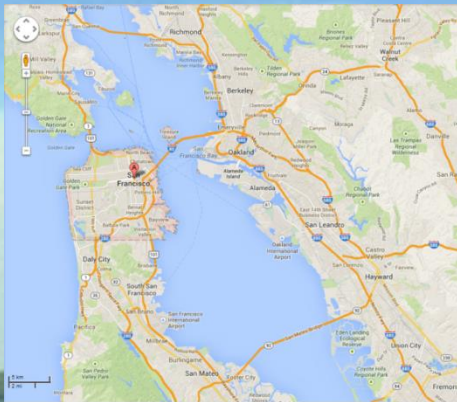
Target over 50,000 operators

Target over 10,000 operators

FIPSI – Flying Innovative Personal Space Icon

WHAT CAN FIPSI DO ?

- FIPSI can achieve outstanding performance in difficult terrain. On land or in the air FIPSI can reach high speeds.
- FIPSI is capable of riding across roads or land and when the obstacles become big or when necessary to avoid certain congested or unsecure ground areas, simply take-off and fly over them.



FIPSI – Flying Innovative Personal Space Icon

Money spent on climate disasters in USA

U.S. 2017 Billion-Dollar Weather and Climate Disasters



This map denotes the approximate location for each of the 16 billion-dollar weather and climate disasters that impacted the United States during 2017.



FIPSI – Flying Innovative Personal Space Icon

Money spent on weather disasters



Billion-Dollar Weather Disasters

World-wide Tally [January-December 2015]



| RANK | DISASTER | DATE | COST | DEATHS |
|------|--|---------------|----------------|--------|
| 1 | Wildfires, Indonesia | 1/1 - 12/31 | \$16.1 billion | 19 |
| 2 | Flooding, Southeast U.S. | 10/1 - 10/11 | \$5.0 billion | 21 |
| 3 | Drought, Western U.S. | 1/1 - 9/30 | \$4.5 billion | 0 |
| 4 | Typhoon Mujigae, China, Philippines | 10/2 - 10/4 | \$4.2 billion | 22 |
| 5 | Flooding, South India and Sri Lanka | 11/9 - 12/8 | \$4.0 billion | 386 |
| 6 | Severe Weather, U.S. Plains, Midwest, Rockies, Southeast | 5/23 - 5/28 | \$3.75 billion | 32 |
| 7 | Winter Weather, Eastern U.S. | 2/16 - 2/22 | \$3.25 billion | 8 |
| 8 | Typhoon Soudelor, China, Taiwan, Saipan | 8/2 - 8/8 | \$3.2 billion | 41 |
| 9 | Severe Weather, U.S. Plains, Midwest, Southeast | 12/26 - 12/30 | \$3 billion | 46 |
| 10 | Drought, Romania, Poland, Czech Republic | 6/1 - 10/31 | \$2.7 billion | 0 |
| 11 | Flooding, UK | 12/22 - 12/31 | \$2.5 billion | 0 |
| 12 | Flooding, China | 6/7 - 6/11 | \$2.0 billion | 16 |
| 13 | Drought, South Africa | 7/1 - 11/30 | \$2.0 billion | 0 |
| 14 | Wildfires, California | 9/9 - 10/30 | \$2.0 billion | 7 |
| 15 | Drought, China | 1/1 - 12/31 | \$1.8 billion | 0 |
| 16 | Severe Weather, U.S. Plains, Midwest, Mississippi Valley | 4/7 - 4/10 | \$1.65 billion | 3 |
| 17 | Typhoon Chan-hom, China | 7/4 - 7/13 | \$1.6 billion | 16 |
| 18 | Flooding, Chile | 3/25 - 4/8 | \$1.5 billion | 25 |
| 19 | Drought, Ethiopia | 10/1 - 12/31 | \$1.4 billion | 0 |
| 20 | Severe Weather, U.S. Plains, Southeast, Northeast | 4/18 - 4/21 | \$1.4 billion | 0 |
| 21 | Severe Weather, U.S. Rockies to Mid-Atlantic | 6/19 - 6/26 | \$1.3 billion | 4 |
| 22 | Flooding, China | 7/20 - 7/24 | \$1.2 billion | 28 |
| 23 | Flooding, China | 5/18 - 5/22 | \$1.15 billion | 48 |
| 24 | Winter Storm Ted, UK, Ireland, Norway | 12/4 - 12/06 | \$1.1 billion | 3 |
| 25 | Severe Weather, U.S. Plains, Midwest, Southeast | 12/22 - 12/26 | \$1.0 billion | 18 |
| 26 | Severe Weather, U.S. Plains, Midwest, Rockies | 5/6 - 5/13 | \$1.0 billion | 6 |
| 27 | Drought, Western Canada | 1/1 - 12/31 | \$1.0 billion | 0 |
| 28 | Winter Storms Mike and Niklas, Western & Central Europe | 3/29 - 4/1 | \$1.0 billion | 9 |
| 29 | Flooding, France | 10/3 - 10/4 | \$1.0 billion | 19 |

Source: Aon Benfield



Weather disasters to impact 2 out of 3 Europeans by 2100 study says



FIPSI – Flying Innovative Personal Space Icon

WHAT CAN FIPSI DO ?

- FIPSI can be flown in or out remote access areas or used in different search and rescue missions.



- FIPSI can be parked as a regular car vehicle in any parking lot or garage.



FIPSI – Flying Innovative Personal Space Icon

WHAT CAN FIPSI DO ?

- FIPSI can be used for :
 - Avoiding Traffic Jam



FIPSI – Flying Innovative Personal Space Icon

WHAT CAN FIPSI DO ?

- FIPSI can be used for :
 - Saving People caught in traffic accidents



FIPSI – Flying Innovative Personal Space Icon

WHAT CAN FIPSI DO ?

- FIPSI can be used for:
 - Flooding rescue



FIPSI – Flying Innovative Personal Space Icon

WHAT CAN FIPSI DO ?

- FIPSI can be used for :
 - Fire rescue



FIPSI – Flying Innovative Personal Space Icon

WHAT CAN FIPSI DO ?

- FIPSI can be used for :
 - War , Earthquake rescue



FIPSI – Flying Innovative Personal Space Icon

WHAT CAN FIPSI DO ?

- FIPSI can be used for :
 - Border patrol



FIPSI – Flying Innovative Personal Space Icon

WHAT CAN FIPSI DO ?

- FIPSI can be used for :
 - Deployment from air carrier



FIPSI – Flying Innovative Personal Space Icon

WHAT CAN FIPSI DO ?

- FIPSI can be used for :
 - War zone, mine field



FIPSI – Flying Innovative Personal Space Icon

WHAT CAN FIPSI DO ?

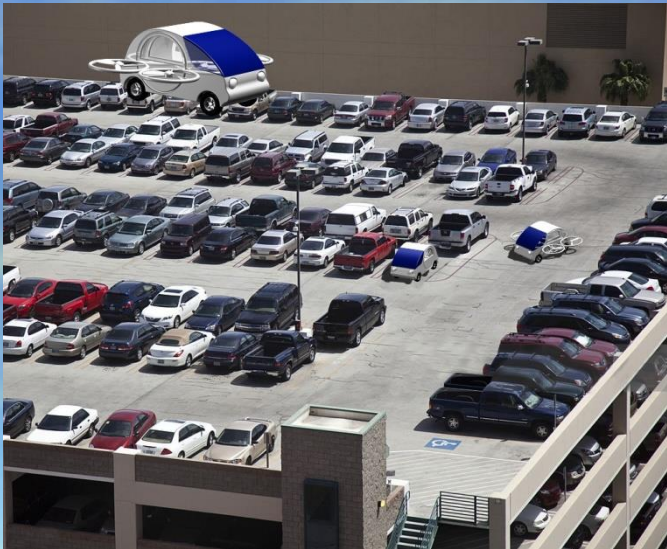
- FIPSI can be used for :
 - Access to remote areas, Oil rig.



FIPSI – Flying Innovative Personal Space Icon

WHAT CAN FIPSI DO ?

- FIPSI can be used for :
 - Easy access in congested cities' area



FIPSI – Flying Innovative Personal Space Icon

WHAT CAN FIPSI DO ?

- FIPSI can be used for :
 - Deployment from air carrier
 - Rescue missions
 - Pleasure sites seeing



FIPSI – Flying Innovative Personal Space Icon

WHAT CAN FIPSI DO ?

- FIPSI can be used for :
 - Access on high rise buildings



FIPSI – Flying Innovative Personal Space Icon

KEY FEATURES:

- The general shape of the described FIPSI flying vehicle during ground or water operations has a similar car look.
- FIPSI achieves vertical take-off and landing and is able to transition on the move between driving, flying and driving back again.
- FIPSI achieves an experience which has not been possible with any previous vehicle packaging.
- FIPSI presents a durable vehicle construction configuration.
- FIPSI can deliver solutions needed in emergency situations that brings help easier and faster, everywhere and every time.



FIPSI – Flying Innovative Personal Space Icon

DRIVING TO FLYING TRANSITION

FIPSI BX4 - TAKE OFF FROM STATIONARY: 3



- With the vehicle in full stopped position, by flicking the dashboard switch will initiate :
 - automation of side doors
 - opening the rotors from the stowed position,
 - closing the side doors and
 - rotating the rotors in a horizontal position relatively to the ground.
- In air, BX4 can fly similar as a helicopter.



FIPSI – Flying Innovative Personal Space Icon

DRIVING TO FLYING TRANSITION

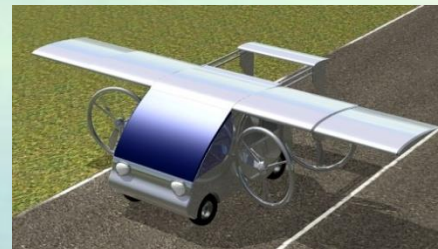
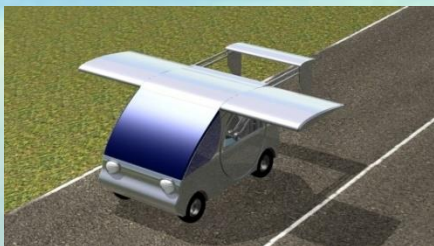
FIPSI WX4 - TAKE OFF FROM STATIONARY:⁴



WX4 - flying.mp4



- With the vehicle in full stopped position, by flicking the dashboard switch will initiate : - the automation of wing deployment, - opening side doors, - opening rotors from the stowed position, - closing the side doors and - rotating the rotors in a horizontal position relatively to the ground.
- In air, by transitioning the rotors to a vertical position, WX4 can fly similar as a regular airplane.



FIPSI – Flying Innovative Personal Space Icon

LANDING AND PARKING

- FIPSI can take off or land as a VTOL vehicle on any clear street, driveway or parking lot.
- FIPSI can be parked as a regular car in any parking lot or garage.



FIPSI – Flying **I**nnovative **P**ersonal **S**pace **I**con

POTENTIAL USAGE OF FIPSI DRONE

- > SMALL SCALE VEHICLE

Unmanned FIPSI vehicle can be used by:

- Any operator as a car or as a drone.
- Medical services to get fast to the site of an accident.
- Logistic services to deliver/bring back products in/from remote location
- Police for executing regular or special search missions.
- Fire Department for unmanned search and rescue missions.
- Special Services for unmanned special search operations.
- Military personnel for any combat missions.



FIPSI – Flying **I**nnovative **P**ersonal **S**pace **I**con

BENEFITS OF FIPSI CONFIGURATION:

Mixing a land type CAR vehicle with an air type DRONE vehicle can be achieved:

- 1 – DRIVE anywhere avoiding any obstacle or restrictions.
- 2 - Increased DRONE vehicle operability time – required energy necessary to fly a vehicle is much higher than required energy to roll a vehicle on the ground.
- 3 - Accurate control of the DRONE vehicle in tight or limited space environment, where flying is not possible or required.
- 4 - Hide the flying DRONE vehicle from others by rolling the vehicle on the ground when possible.
- 5 - Hide the flying DRONE vehicle capabilities by keeping the car look DRONE vehicle configuration parked in congested or populated areas.



FIPSI – Flying **I**nnovative **P**ersonal **S**pace **I**con

BENEFITS OF FIPSI CONFIGURATION:

- 6 - Minimize flying DRONE environment noise by rolling the vehicle on the ground.**
- 7 - Minimize multiple flying DRONE vehicles transportation and storage capability and avoid rotor blades damage, when flying configuration is not required.**
- 8 - Take advantage of the flying DRONE closed body configuration by protecting the deliverable loads from outside environment.**
- 9 - In remote locations, rolling the DRONE vehicle on the ground can achieve a faster and accurate vehicle control.**
- 10– Using the flying car DRONE can deliver or bring back from remote locations of persons or heavy loads.**
- 11– etc.**



FIPSI – Flying Innovative Personal Space Icon

POTENTIAL USAGE OF FIPSI DRONE

- > FULL SCALE VEHICLE



Unmanned or manned FIPSI vehicle can be used by:

- Any operator for personal usage.



- Ambulance services to get fast to the site of an accident.



- Fire Department save persons in high rise buildings



- Special Services for rescuing people from flooding area.



- Special services rescuing people from earthquake area



- Special Services for deploying personnel in remote areas.



- Military personnel for any combat missions.



FIPSI – **F**lying **I**nnovative **P**ersonal **S**pace **I**con

INTELECTUAL PROPERTIES



FIPSI is currently patent protected.

- The patentable aspect of the design is “flying vehicle”.
- The patentable mechanism can be briefly described as rotors packed inside a vehicle body.
- FIPSI configuration can vary in design, therefore a family of similar models could be designed and developed in the future.
- Similar to the iPhone, flying car drone FIPSI (Flying Innovative Personal Space Icon) is bringing to market a new innovative method of packaging existing automotive , helicopter and airplane technologies in the same vehicle.



ADVANCED SYSTEM ENGINEERING

FIPSI – **F**lying **I**nnovative **P**ersonal **S**pace **I**con



FIPSI can deliver solutions needed in emergency situations that brings help easier and faster, everywhere and every time.



For inquires contact:
OFFICE@FIPSI.ORG

14



Applications.mp4